



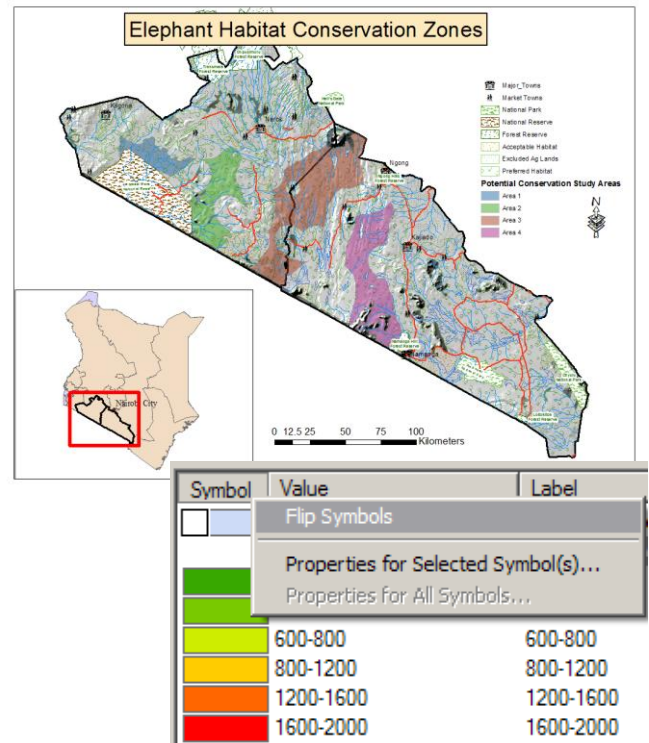
These courses will work with several analysis projects to demonstrate how these skills can be applied. These projects will data from the US, Kenya and some local data from each country where we offer the classes. Exercises will work with typical GIS scenarios. If we have time, we will also see how to work with Google Earth.

Topics will include:

- Using ArcMap, ArcCatalog, ArcToolbox
- Working with layers, data frames, & maps
- Projecting data between coordinate systems
- Selecting and querying features
- Creating & using layer symbology in ArcMap
- Labeling features, working with annotation
- Managing & editing tables
- Editing data & managing edit sessions
- Basic Geoprocessing & Analysis tools
- Creating layouts in ArcMap
- Using ModelBuilder for Analysis & creating tools.
- Working with Spatial Analyst
- Understanding Raster GIS & Raster Analysis
- Working with Excel
- Creating XY Point Locations from tables
- Working with Google Earth

Software and Computer:

This class will be taught using ArcGIS 10. Students will need to bring a PC laptop with Window's XP, Vista or Windows 7 with at least 1gb of ram (though we recommend not using Vista). Mac laptops running a Window's emulator do not always work well. We will provide evaluation copies of the software to use during, and after you have completed the course. If you want to get the software in advance, you can request an evaluation DVD from ESRI at: <http://www.esri.com/software/arcgis/arcview/eval/evaluate.html>. Since the first session will be loading software, if you already have the software loaded and working, you can spend a few more minutes relaxing.



OBJECTID*	LOCATION_	SITE_ID	LAT	LONG	Shape*
2	Bucaneros	BUC10	18.68731	-87.71051	Point
3	Bucaneros	BUC20	18.68661	-87.70937	Point
4	Dolphin Bay	DB05	18.72411	-87.69834	Point
5	Dolphin Bay	DB10	18.724	-87.69676	Point
6	Faro Viejo	FV05	18.74239	-87.67865	Point
7	Faro Viejo	FV10	18.74206	-87.67701	Point
8	Faro Viejo	FV20	18.74183	-87.67444	Point
9	Los Escalones	LE05	18.71992	-87.70112	Point
10	Los Escalones	LE10	18.71956	-87.69945	Point

