

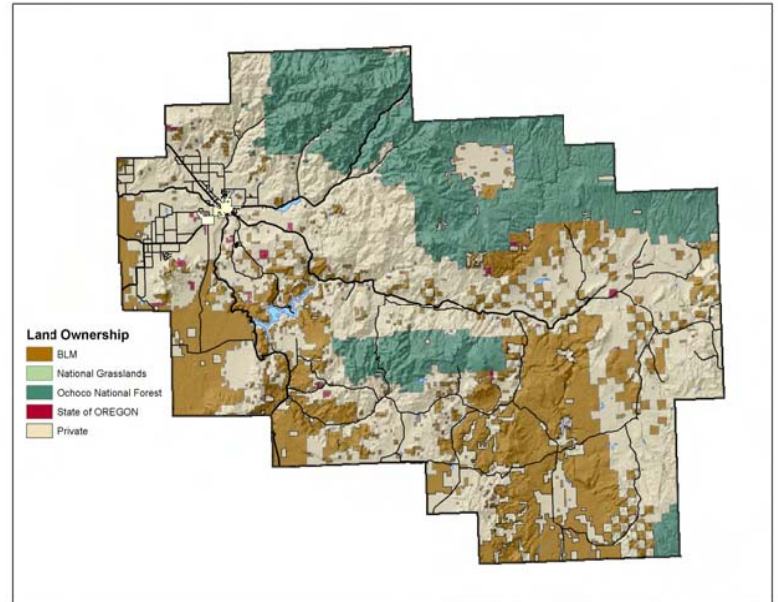


Developing a cost-effective GIS across multiple government agencies.

Juniper GIS worked as the GIS Coordinator for Crook County from 1999 to 2003, working with all government agencies including City of Prineville, Crook County, Prineville Fire Protection District and Crook County School District to develop its GIS data and services. An initial GIS Needs Assessment served to inform people about GIS capabilities and to gather information about the needs of all participating agencies.

Other agencies with GIS resources and a special interest in GIS development in Crook County became involved as needed. These included Ochoco National Forest, Prineville Office of the BLM, Oregon Department of Forestry, Bureau of Reclamation, Oregon Water Resources

Board, irrigation districts, and utility companies. Juniper GIS wrote grants to gain funding for this project through the Oregon Department of Revenue and federal Title 3 funds, as well as using volunteers from the fire department and high school students to minimize the costs of data acquisition and get the GIS started quickly.



Project Accomplishments:

- Converted all parcel maps to GIS digital format
- Created Zoning and Urban Growth Boundary maps.
- Successfully challenged 2000 Census housing counts for the City of Prineville, by comparing Census 2000 housing counts to GIS database.
- Created maps to delineate drug-free zones around schools.
- Linked all Assessor's maps (scanned images) to an index map
- Upgraded roads data and street addressing for emergency services and pavement management.
- High School involvement -Students helped with significant data editing in 911 addressing project. The students had the opportunity to learn about GIS and to gain valuable work experience.
- Prineville Fire Protection District -Created map books to be used in police and fire vehicles for emergency services.

