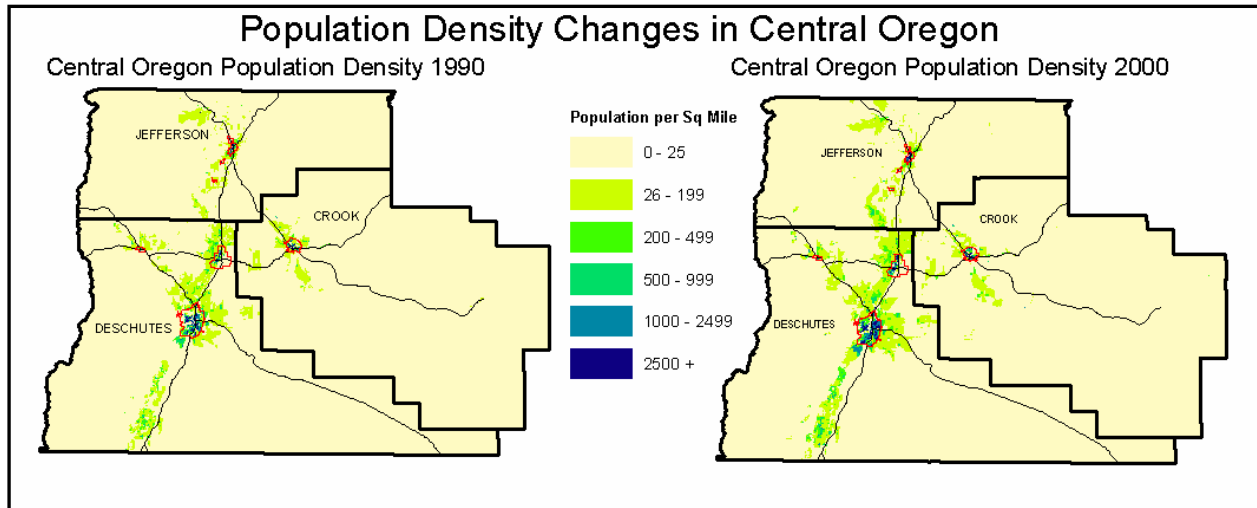


Comparing Population Density in Central Oregon 1990-2000



Juniper GIS worked with 1000 Friends of Oregon to examine changes in population density in Central Oregon between 1990 and 2000. Creating maps that show the change visually is relatively easy, as seen in the illustration above. But because census block boundaries are not consistent between 1990 and 2000, analyzing this change quantitatively at the census block level is a problem.

One method to compare density between differently sized measurement units is to change from a vector-based map where boundary lines are drawn arbitrarily to a cell-based map, where the data is interpolated and fit to consistently sized and aligned squares. This method allows the user to create a map quantifying the change. Another benefit of using raster is that this tends to smooth out the data and provides a more realistic picture of the trends over a large area.

